

PRODUCT MINILOGUE

CONTROL PANEL SOLUTIONS | INDUSTRIAL SOLUTIONS
SOLUTIONS FOR ELEVATORS | AUTOMOTIVE AND APPLIANCES

Seamlessly Integrating Products Across Diverse Industries!



ESBEE ELECTROTECH LLP

Established in India in 1974, Esbee Electrotech LLP is a leader in industrial products & switches, appliance switches, enclosures and elevator safety solutions. Known for its unique push buttons, stations, and LED indicators, Esbee prioritizes innovation and modern technology.

With visionary leadership and a commitment to excellence, we have built a strong global reputation, delivering high-quality and reliable solutions.

ISO 900:2015
ISO 14000:2015
ISO 45000:2018

IATF 16949 : 2016
Certified Company



Wide Customer
Network

Indian &
International Approvals
& Accreditations



SUSTAINABLE PRACTICES at **ESBEE**

*At Esbee, sustainability is more than a business imperative.
It is a social responsibility that forms part of our way of doing business.*



SUPPLIERS

- Consistent and profitable growth through responsible sourcing.
- Fair and transparent business practices in every partnership.
- Strong, long-term supplier relationships built on trust.



ENVIRONMENT

- Compliance with all environmental norms.
- Sustainable and efficient waste-management practices.
- 50% of total energy generated through clean solar power.



OUR PEOPLE

- Comfortable, safe, and well-designed workplaces.
- Inclusive, people-centric, and sustainable HR culture.
- Long-term, respectful employee associations.



CUSTOMERS

- Consistent customer delight across interactions.
- High-quality, reliable, and innovative products.
- Customized, value-driven customer solutions.



INDICATORS

Digital Indicators

- Measures voltage, current, frequency, and temperature
- 22.5 mm compact panel-mount design
- Multi-colour LED display – Red, green, blue, yellow, amber
- Accurate and reliable performance for industrial environments
- IP65 (front) / IP20 (rear) protection rating
- UL V0/V2-grade flame-retardant plastics for enhanced safety



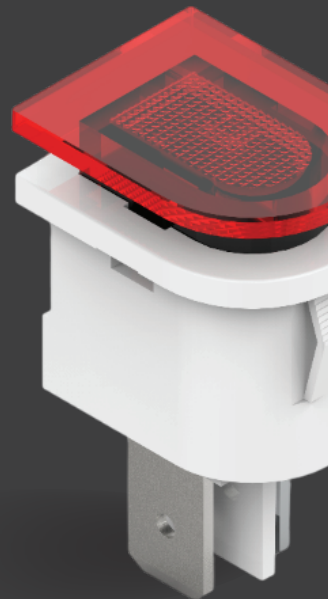


LED Indicators

- Best-in-class illumination with advanced SMD LED technology
- In-built low-voltage glow protection for reliable performance
- Comes in 16 mm and 22.5 mm panel size options
- IP65 (front) / IP20 (rear) protection rating

Neon / LED Indicator (8 / 10 mm)

- Multicolour options for versatile phase indication
- Cost-effective solution for the manufacturing and appliance industries
- Quick disconnect design for easy installation and maintenance
- Suitable for 6.2 mm terminals



PUSH BUTTONS

Pro and Metal Series

- Unique, compact design for modern industrial panels
- Screwless contact block assembly for quick and easy installation
- Illuminated and non-illuminated variants available
- IP65 (front) / IP20 (rear) protection rating
- Compliant with EN 45545 standard

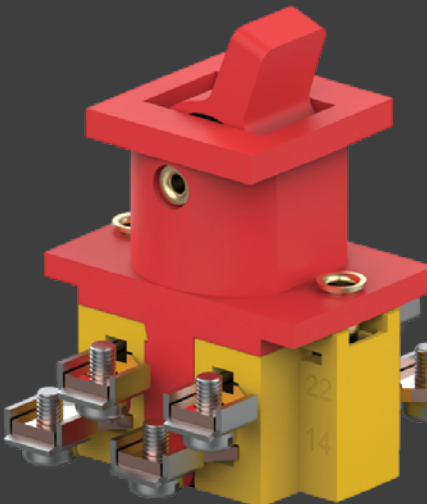


Circuit Breaker Switch

- Reliable tripping operation
- Specially designed for HVAC applications
- Compact and space-saving design
- 1NC configuration
- Developed with fire-retardant material

Contact Blocks

- Operates on low voltage (5V DC / 0.1A) and high voltage (240V / 6A), depending on contact type (gold / silver)
- Offered in NO & NC variants
- Compact design with options for PCB mounting, cage clamp and screw terminals
- Stackable attachments with FRC for multi-function push button operations
- Compliant with EN 45545-1 standard



EBS (Emergency Break switch)

- Toggle-type switch engineered for durability — up to 100,000 cycles
- Available in 2NO+2NC and 1NO+1NC contact types
- Rated current: 10A
- Wide operating temperature range: -30°C to +70°C
- Specially designed for elevator applications

SIGNALING UNITS

Multifunction Tower Lights (70 mm)

- Low power consumption with long-distance visibility
- Multiple mounting and size options for flexible installation
- Inbuilt modes: continuous, flashing, or rotating — selectable via tact key
- Buzzer with 10+ tone options and digital input control (PNP/NPN)
- Compatible with Modbus RTU or wireless gateway
- Wide supply range: 24VDC / 48–240V AC/DC
- Wireless range: 100–150 m (with obstacles)





Tower Lights (50 mm)

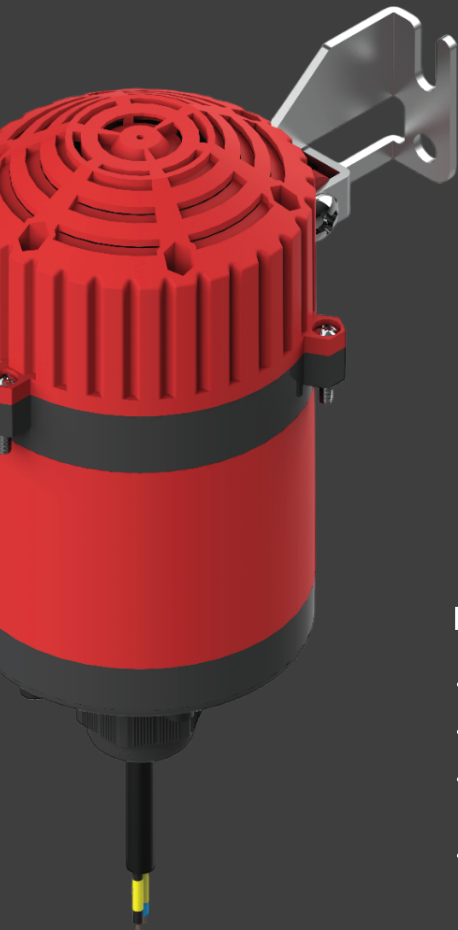
- Sleek, stackable design with transparent color lenses
- SMD LED technology ensures bright, uniform illumination
- Expandable from single to multi-layer units (up to 4 levels)
- Includes mounting attachments for easy setup



Pro Tower Lights (50 & 70 mm)

- High-lux lenses with uniform light output in white or colored diffused options
- Continuous, flashing, and integrated LED modes available
- Pre-wired, factory-set design for quick installation

SIGNALING & AUDIO DEVICES



High dB Siren

- Supply voltage: 24V DC / 110V / 240V AC
- Sound output: 100–105 dB @ 5 m (open air)
- IP65 protection for outdoor and industrial use
- Ideal for railway, automotive, and industrial emergency systems

Siren Flasher

- Sleek, compact design with integrated SMD LED technology
- Available in multiple colours with flashing and rotary LED modules
- IP65-rated for reliable performance in industrial environments



Panel Mounted Hooter

- Standard model with 3 selectable tones (customizable options available)
- 96 × 96 mm panel cut-out
- Sound output: 90–100 dB @ 1 m
- Available in 12/24V DC, 110/240V AC, and universal 24–240V AC/DC



Flasher with Buzzer

- Dual-mode operation: Continuous or intermittent
- Available in multiple color options
- Operates on 12/24V DC or universal 24–240V AC/DC
- Sound output: $\leq 80 \text{ dB}@1 \text{ m}$



Alarm Horn

- Sound output: 90–100 dB@1 m
- Multiple factory-set tone options
- Wall-mountable with screw fittings
- Ideal for elevators, emergency systems, and alarms
- Available in custom colour options



Proximity Sensors

- Inductive type sensors with sensing range 2–20 mm
- Metal housing ensures durability and superior IP protection
- Available sizes: M8, M12, M18, M30



Limit Switches

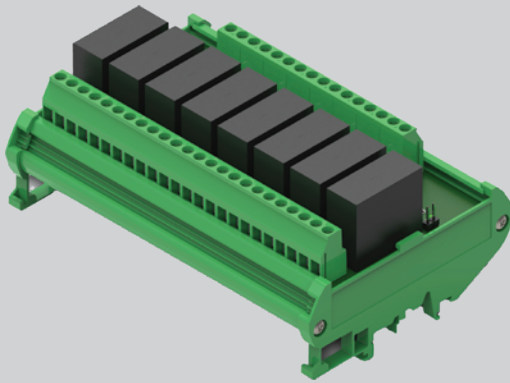
- Rugged metal and plastic body construction
- Multiple actuator options for varied applications
- Oil, water, and dust-proof for harsh environments



Sockets: (Schuko, Universal 3 pin/2 pin)

- Protective flap for ingress protection
- Durability: up to 10,000 operating cycles
- Compatible with plug types C, E, and F
- Rated current: 6A / 10A / 16A
- Operating temperature: -10°C to +50°C
- Suitable for home and industrial applications



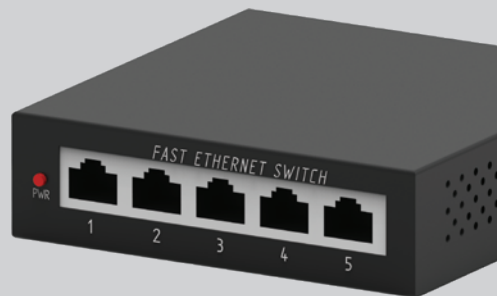


Relay Board & Interface Modules

- 4, 8 and 16 channel potential-free relay contacts
- Type 1: Receptacle relay board for digital inputs (up to 1 lakh cycles)
- Type 2: Modbus RTU protocol for HMI/PLC (RS-485)
- Type 3: Ethernet Modbus TCP/IP communication
- Type 4: Wireless RF relay control via Modbus RTU

Unmanaged Industrial Network Switch

- 9–36V DC input with industrial-grade protection
- 5 Ethernet ports with speed up to 10/100/1000 Mbps
- Unmanaged LAN switch for reliable network connectivity



PRODUCTS FOR ELEVATORS

Pit Box

- IP67 (with bellow and gasket)-rated for dust and water resistance
- Customizable for diverse applications
- Fire-retardant, robust, and maintenance-free design
- Magnetic and screw mounting options





Wedge Suspension

- Ideal for flat wire clamping and safeguarding
- Holding capacity: up to 1.8 kN
- Accommodates 80 mm flat wire with ease

Stations/Enclosures

- Rugged construction with IP65 protection
- Available in 1–5 station configurations
- Multiple actuator options for varied applications
- Customizable designs available



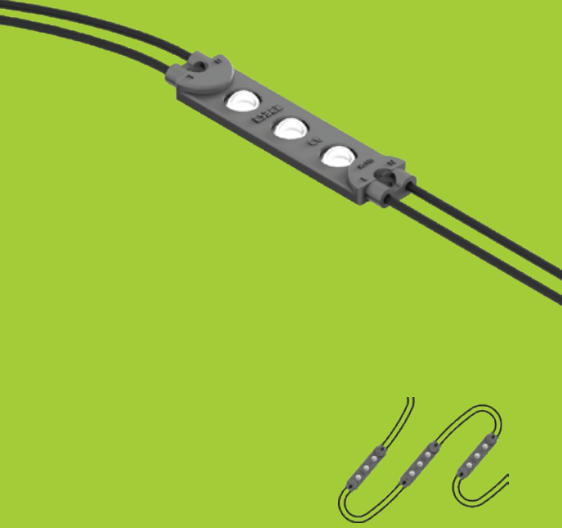
TOCI Units

- Designed as per EN 81-20 / EN 81-50 elevator safety standards
- Customizable with cam switch, socket, push button, and selector switch
- IP65 protection, robust ABS plastic housing
- Ample space for internal wiring and 12 gland entries
- Options for custom color, labelling, and hole configurations



Pendants

- Ergonomic design with secure grip and easy handling
- Interlocking flush heads ensure safe operation
- Offered in both single-speed and double-speed models
- Comes in 3, 5, 6 and 8 station configurations
- Ample wiring space, hook mount, and rubber hose entry for multi-core cables
- Built-in ejection protection for contact blocks



Shaft Light

- Operates on 12V / 24V / 240V (on-board driver)
- High illumination, low power consumption
- Cascadable up to 100 m for extended installations
- Self-adhesive or screw mounting
- Ideal for pit or chest freezer emergency lighting

Illuminated Legend Plate

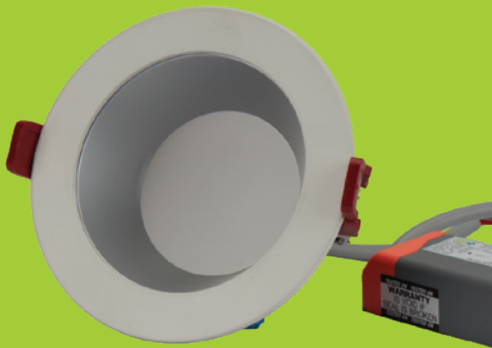
- Universal 22.5 mm mounting diameter
- Dual-color switching in Gen-Next version
- Compact Pro version for space efficiency
- Suitable for panel building and appliance applications
- Diffused white, clear and yellow covers available
- Compatible with UV LED disinfection systems





LED Hand Lamp

- High-illumination LED torch with long life (~100,000 hrs)
- Low power consumption and durable design
- Integrated hook for easy handling
- Available in 110V AC / 230V AC



Spot Light

- Designed for elevator lighting applications
- Bright, uniform illumination with robust build
- Tested for 1,000-hour temperature endurance
- EMI/EMC certified for reliability

Machine Lights

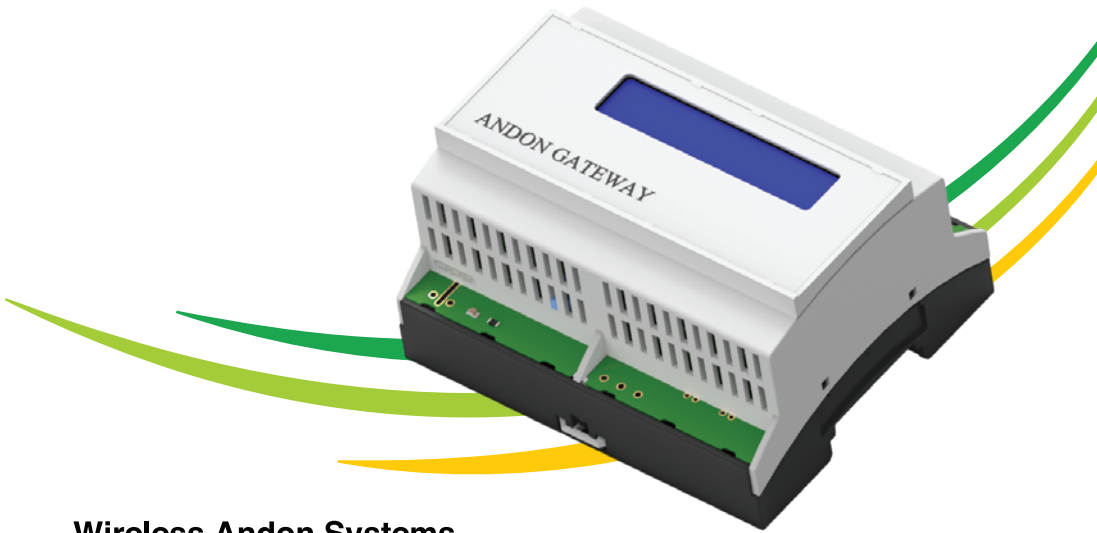
- Supports multiple sizes and voltage configurations
- Designed with IP67 protection for extreme environments
- Compliant with EN 45545-1 standard

LED Tubes & Panel Lights

- Robust, corrosion-resistant, fire-retardant design
- Withstands 2.5 kV surge and 4 kV EFT
- Panel lights with an optional motion sensor and battery backup



WIRELESS SOLUTIONS



Wireless Andon Systems

- RF technology (868 MHz) with 100–150 m range (with obstacles)
- Web-based interface with secure login and data management
- MySQL database for long-term storage
- Android app integration and gateway-based communication
- Enables seamless link between Andon systems and computers



Wireless Crane Pendants

- 100–150 m communication range with a unique encrypted ID
- Six-direction control, single and double-speed operation
- Available in 24V DC, 110V, and 230V AC
- Emergency switch version coming soon



Air Push Series

- Pocket-sized transmitter with integrated battery
- 868 MHz frequency band with reliable modulation
- Effective range: up to 150 m

APPLIANCES

Switches

- Applications: refrigerators, washing machines, medical & industrial devices
- RoHS certified (IS/IEC 60079 series)
- IP20 protection with sleeve or boot
- Available in white and custom colours



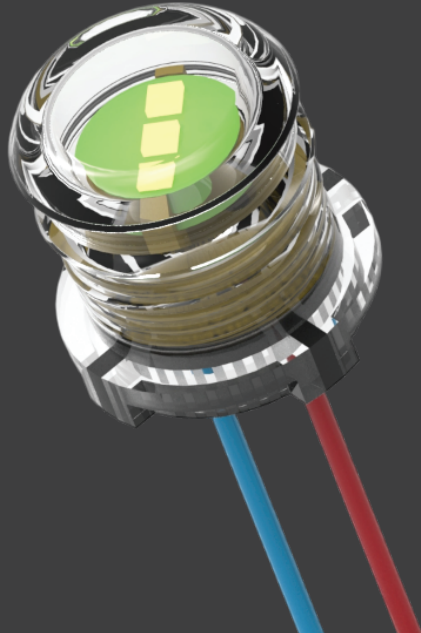
Interlock Switch

- Rounded plunger actuator for smooth push-type operation
- Specially designed for HVAC applications
- Compact and space-saving design
- 1NO configuration
- Developed with fire-retardant material



Drum Light

- Operates on 5V / 12V / 24V DC
- IP67 protection (IEC 60529:2013)
- Bright, low-power illumination
- Designed for washing machines; suitable for emergency lighting



LED Socket

- Bright LED solution for refrigeration applications
- Low power consumption with surge protection (1.5kV / 2.5kV / 4kV)
- Custom-fit harness and mounting options
- Flame-retardant UL V0 material

M Series Rocker Switch

- Available in round and square designs
- Illuminated and non-illuminated variants
- Rated for 240V / 10A, with SPDT / SPST configurations
- Tested for 10,000 cycles
- IEC 60079:2015 certified for appliance applications



Voltage - Current / Humidity Controller

- High-accuracy sensing: humidity (10–96% RH, $\pm 1\%$), voltage, and current
- Isolated CT for current measurement
- Compact, panel-mounted digital display
- Includes potential-free relay (5 A)
- Wide input range: 24–240V



AUTOMOBILE SOLUTIONS

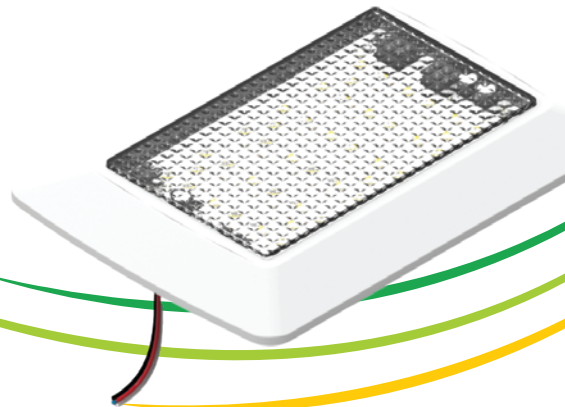


Automobile SOS Switches

- AIS 140 certified for automotive emergency use
- Operating range: 18–30V DC
- Electrical / mechanical life: 100,000 operations
- Suitable for passenger cars and buses

Cabin Light

- Designed for automotive and elevator applications
- (12/24 V DC) operation with high illumination
- Dim and night light modes
- CE certified, IP65 protected



Product Range



Industrial



White Goods



Elevators



Automobile



Customized Solutions

ESBEE

Ordering
Catalogue



Follow us on
LinkedIn



Esbee Electrotech LLP

Corporate office: Plant 1: S-42/1, S-42/1, M.I.D.C	M.I.D.C Bhosari, Pune - 411026, Maharashtra, India	Plant 2: J-159, M.I.D.C Bhosari, Pune - 411026, Maharashtra, India	Plant 3: C-29, M.I.D.C Ahmednagar - 414111, Maharashtra, India
---	--	---	---

Email: info@esbee-electrotech.com
Website: www.esbee-electrotech.com